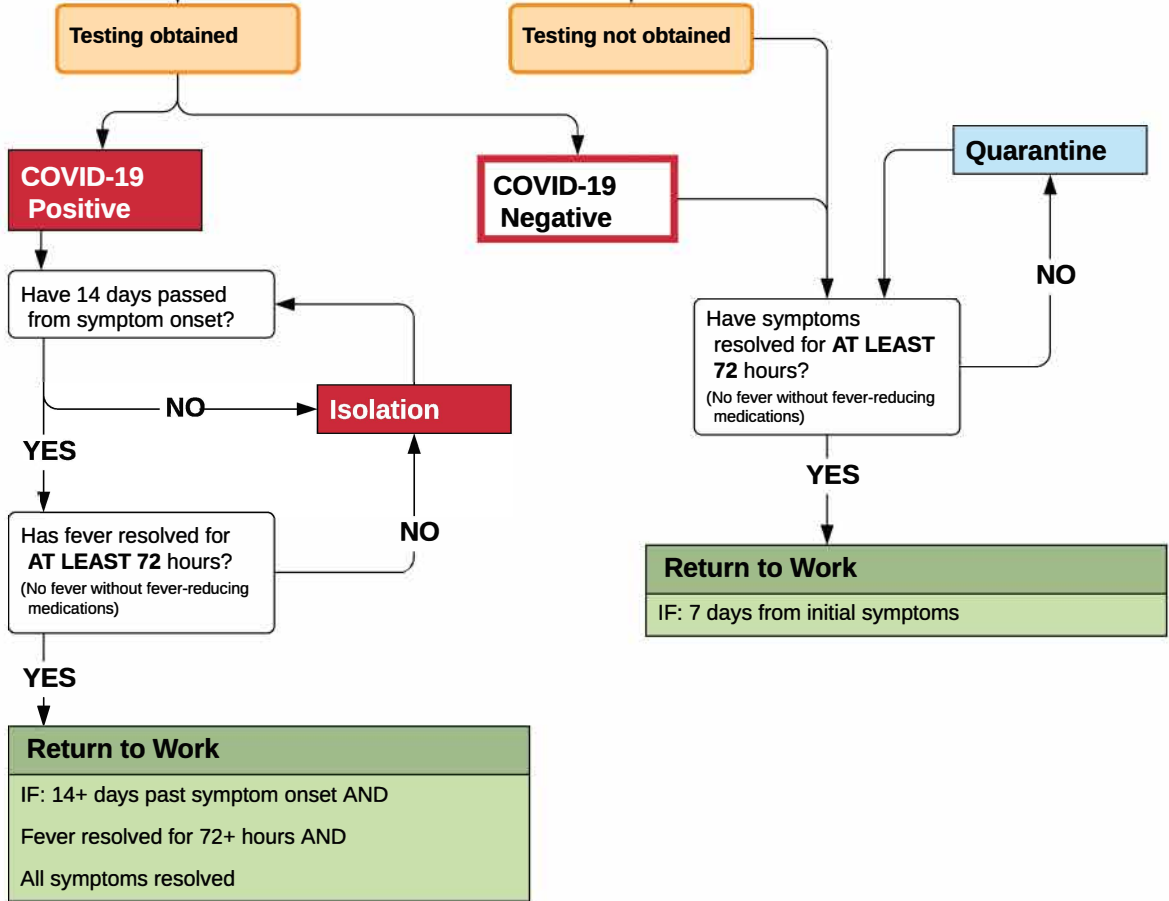


Returning to Work - Symptomatic Employees with No Documented Exposure

No Documented Exposure to Positive COVID-19 Person
Employee is sick or has symptoms consistent with COVID-19

Symptomatic for COVID-19
Testing for COVID-19 is encouraged for symptomatic employees

General Illness
Employee should return to work only when symptoms have resolved



Symptoms include:
New onset of any 1 of the following: shortness of breath, or difficulty breathing
(OR)
New onset of 2 or more of the following: chills, diminished sense of taste or smell, diarrhea, fatigue, fever => 100.4 F, headache, nausea, runny nose, sore throat, rigors, muscle/joint aches, conjunctivitis or sputum production



Adapted from Anchorage Fire Department's COVID-19 Occupational Health and Safety Manual - April 15, 2020

Returning to Work after Confirmed Exposure and Quarantine

